

AKCIE A VYBRANÉ AKCIE

VZDĚLÁVACÍ SETKÁNÍ ČNATA
5. května 2017

Tomáš Novotný, ČNATA

DRUHY AKCIÍ

- kmenové (**common**)
- přednostní (**preferred**)
- a další (zaměstnanecké...)

COMMON vs. PREFERRED

Preferred

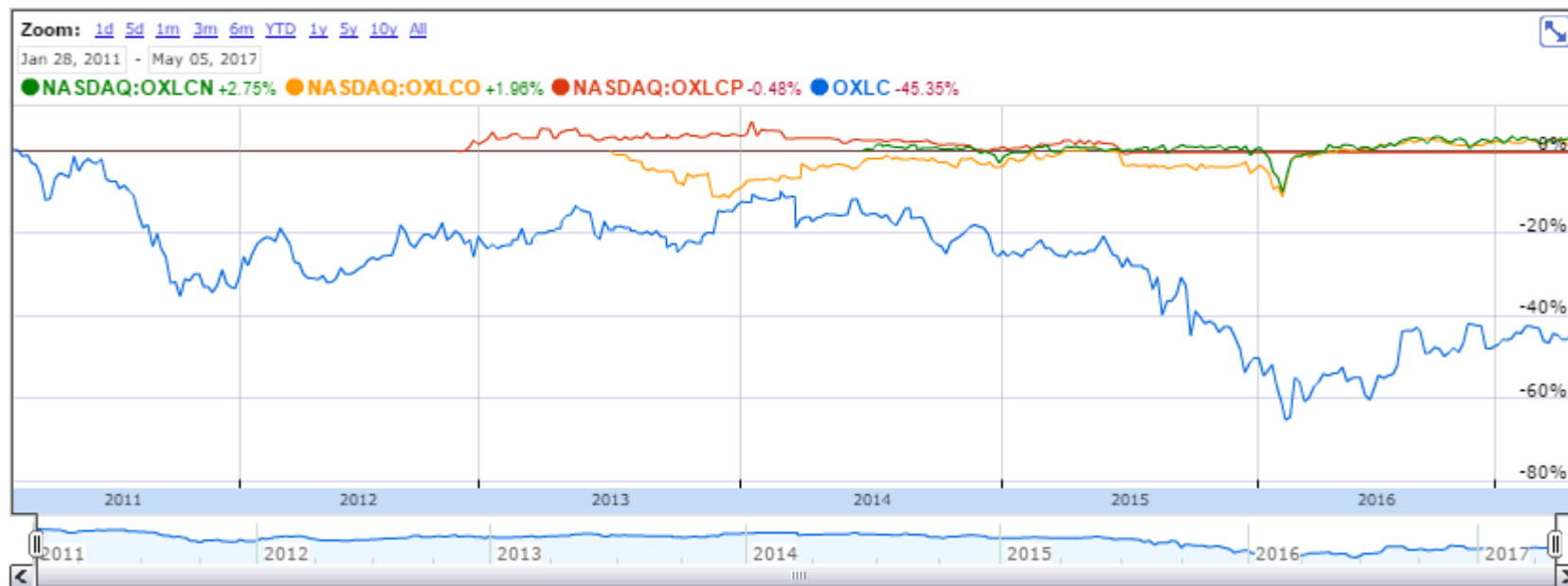
Mají vždy nějakou výhodu pro držitele

- přednostní podíl na likvidačním zůstatku
- přednostní výplata dividend

ale i nevýhodu

- mohou být časově omezeny
- předem stanovený výnos

COMMON vs. PREFERRED OXLC



OXLC

Oxford Lane Capital Corp (NASDAQ:OXLC)

Add to portfolio

10.92 -0.01 (-0.09%)

May 5 - Close
NASDAQ real-time data - Disclaimer
Currency in USD

Range	10.89 - 10.98	Div/yield	0.40/14.65
52 week	7.53 - 11.80	EPS	1.01
Open	10.89	Shares	19.76M
Vol / Avg.	88,147.00/134,875.00	Beta	0.91
Mkt cap	205.18M	Inst. own	10%
P/E	10.79		

G+1 10

Compare:

Add

Dow Jones

Nasdaq

KCAP

TICC

ACSF

HCAP

AINV

ECC

ARMF

Interval: [2min](#) [5min](#) [30min](#) [daily](#) [weekly](#)

Jan 09, 2015 - May 05, 2017 -4.22 (-27.87%)



OXLC

Oxford Lane Capital Corp. - 8.125% Series 2024 Term Preferred Stock (NASDAQ:OXLCN)

Add to portfolio

25.79 +0.07 (0.27%)

May 5 - Close
NASDAQ real-time data - Disclaimer
Currency in USD

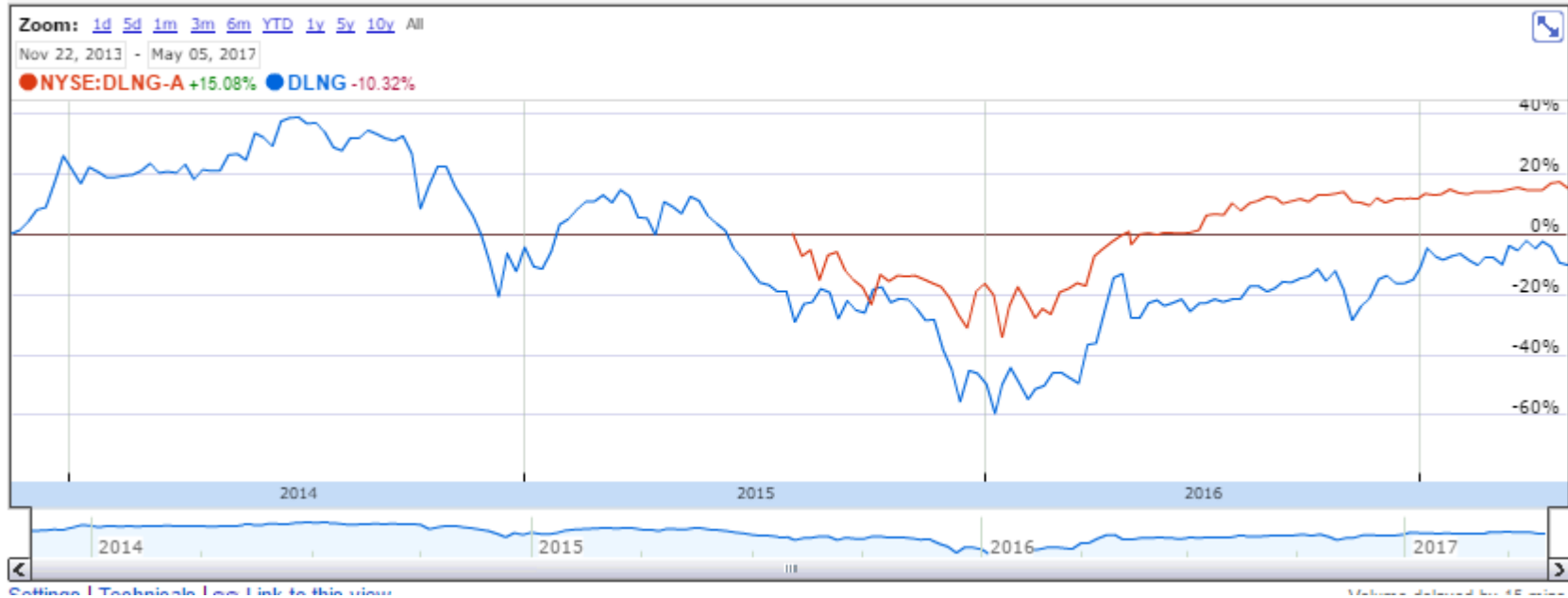
Range	25.71 - 25.79	Div/yield	-7.88
52 week	25.00 - 26.05	EPS	-
Open	25.74	Shares	1.12M
Vol / Avg	1,402.00/1,515.00	Beta	-
Mkt cap	28.81M	Inst. own	-
P/E	-		

G+1 0

Compare: Dow Jones Nasdaq KCAP TICC ACSF HCAP AINV ECC ARMF



COMMON vs. PREFERRED DYNAGAS LNG PARTNERS LP



DYNAGAS LNG PARTNERS LP

Dynagas LNG Partners LP (NYSE:DLNG)

Add to portfolio

16.16 +0.69 (4.46%)

May 5 - Close

NYSE real-time data - Disclaimer

Currency in USD

Range	15.51 - 16.20	Div/yield	0.42/10.46
52 week	12.36 - 17.93	EPS	1.88
Open	15.54	Shares	20.50M
Vol / Avg.	153,281.00/166,512.00	Beta	1.14
Mkt cap	579.11M	Inst. own	45%
P/E	8.59		

G+1 9

Compare:

Dow Jones S&P 500 GLOG GLNG TGP GMLP NAP NNA STNG

Interval: [2min](#) [5min](#) [30min](#) [daily](#) [weekly](#)

Jan 09, 2015 - May 05, 2017 -1.09 (-6.33%)



DYNAGAS LNG PARTNERS LP

Dynagas LNG Partners LP 9.00% Series A Cumulative Redeemable Preferred Units (NYSE:DLNG-A)

Add to portfolio

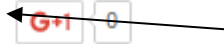
26.01 +0.02 (0.08%)

May 5 - Close

NYSE real-time data - Disclaimer

Currency in USD

Range	25.95 - 26.25	Div/yield	-/8.65
52 week	21.72 - 26.93	EPS	-
Open	25.95	Shares	3.00M
Vol / Avg	2,490.00/6,599.00	Beta	-
Mkt cap	77.97M	Inst. own	-
P/E	-		



Compare:

Dow Jones S&P 500 GLOG GLNG TGP GMLP NAP NNA STNG

Interval: [2min](#) [5min](#) [30min](#) [daily](#) [weekly](#)

Aug 07, 2015 - May 05, 2017 +3.41 (15.09%)



TŘÍDY AKCIÍ

- Class A, B, C
- Stanoví vlastníci při IPO
 - Rozdílná síla hlasů

TŘÍDY AKCIÍ

Alphabet (NYSE:GOOG)

- Class A – common stocks, každá akcie má 1 hlas
- Class B – každá akcie má 10 hlasů (vlastní je Page a Brin)

SHELL (NYSE:RDS.A/RDS.B)



ROYAL DUTCH SHELL RDS.A

54.23 +1.53 (2.91%)

May 5 - Close

NYSE real-time data - Disclaimer

Currency in USD

Range	52.91 - 54.24	Div/yield	0.94/6.93
52 week	46.57 - 56.39	EPS	1.87
Open	52.93	Shares	4.45B
Vol / Avg.	5.54M/3.45M	Beta	1.12
Mkt cap	230.98B	Inst. own	6%
P/E	29.02		

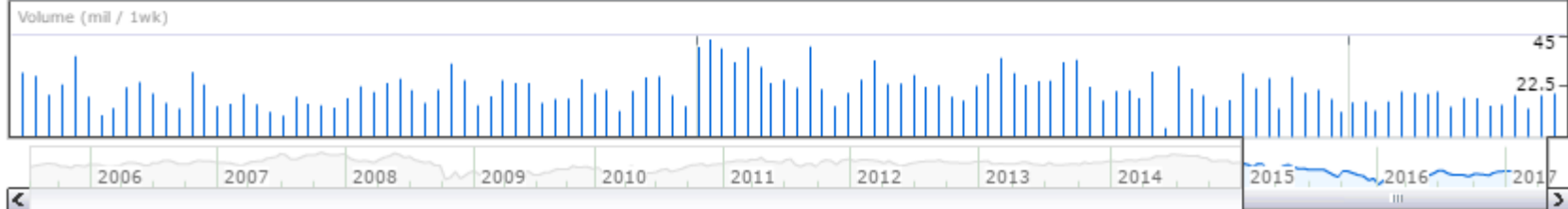
6+1 102

Compare:

Dow Jones S&P 500 TOT XOM CVX BP PBR E PTR

Interval: [2min](#) [5min](#) [30min](#) [daily](#) [weekly](#)

Jan 09, 2015 - May 05, 2017 -12.76 (-19.05%)



ROYAL DUTCH SHELL RDS.B

56.08 +1.91 (3.53%)

May 5 - Close

NYSE real-time data - Disclaimer

Currency in USD

Range	54.73 - 56.09	Div/yield	0.94/6.70
52 week	48.18 - 59.56	EPS	1.87
Open	54.74	Shares	3.74B
Vol / Avg	2.36M/1.75M	Beta	1.15
Mkt cap	230.18B	Inst. own	8%
P/E	30.01		

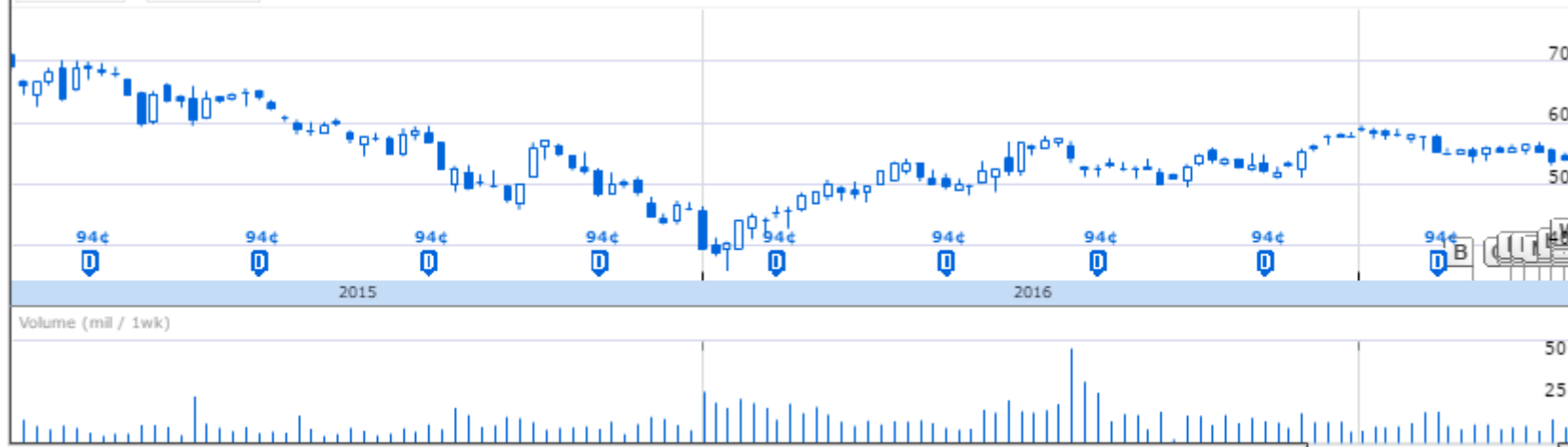
G+1 30

Compare:

Dow Jones S&P 500 TOT XOM CVX BP PBR E PTR

Interval: [2min](#) [5min](#) [30min](#) [daily](#) [weekly](#)

Jan 09, 2015 - May 05, 2017 -13.07 (-18.91%)



DALŠÍ MOŽNOSTI

Master Limited Partnership

- struktura/vehikl podobný holdingu, ale úplně jiný
- samostatné, nemá zaměstnance
- daňové důvody
- vhodné pro pravidelné příjmy z dlouhodobých kontraktů (ropovody, pronájmy lodí)
- nevyplácí dividendu, ale distribuční podíl (distribution)
- nemá akcie, ale podíly (units)

STRUKTURA MLP

- generální partner (sponzor) – jiná společnost
- partneři „s.r.o.“ - akcionáři

NAVIOS MARITIME

NM – Navios Maritime Holding – generální partner

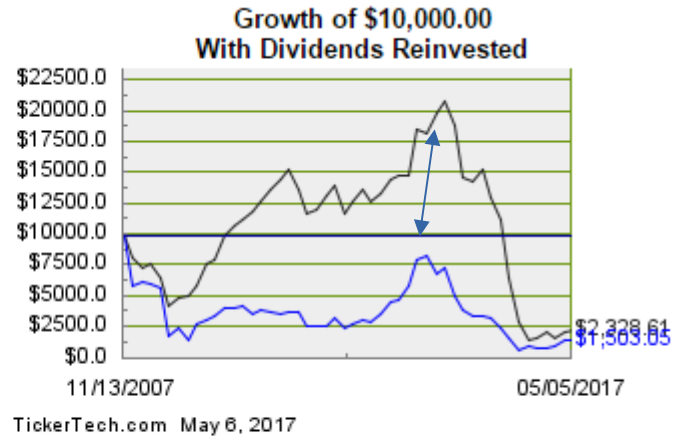
- NMM – Navios Maritime Partners **L.P.** = MLP

NM vs. NMM



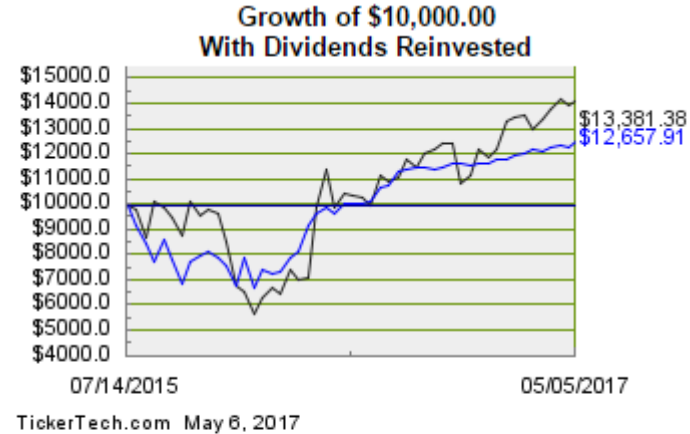
NM vs. NMM

	<u>NMM</u>	<u>NM</u>
Start date:	11/13/2007	11/13/2007
End date:	05/05/2017	05/05/2017
Start price/share:	\$19.25	\$16.12
End price/share:	\$1.73	\$1.62
Starting shares:	519.48	620.35
Ending shares:	1,346.22	927.49
Dividends reinvested/share:	\$13.12	\$2.05
Total return:	-76.71%	-84.97%
Average Annual Total Return:	-14.25%	-18.12%
Starting investment:	\$10,000.00	\$10,000.00
Ending investment:	\$2,328.61	\$1,503.05
Years:	9.48	9.48



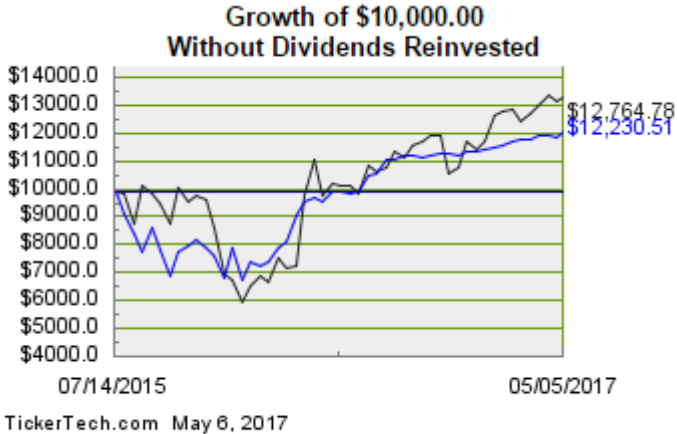
DLNG vs. DLNG.A reinvestice

	<u>DLNG</u>	<u>DLNG.PRA</u>
Start date:	07/14/2015	07/14/2015
End date:	05/05/2017	05/05/2017
Start price/share:	\$14.98	\$24.60
End price/share:	\$16.16	\$26.01
Starting shares:	667.56	406.50
Ending shares:	828.03	486.67
Dividends reinvested/share:	\$2.96	\$4.08
Total return:	33.81%	26.58%
Average Annual Total Return:	17.45%	13.90%
Starting investment:	\$10,000.00	\$10,000.00
Ending investment:	\$13,381.38	\$12,657.91
Years:	1.81	1.81



DLNG vs. DLNG.A výběr dividend

	<u>DLNG</u>	<u>DLNG.PRA</u>
Start date:	07/14/2015	07/14/2015
End date:	05/05/2017	05/05/2017
Start price/share:	\$14.98	\$24.60
End price/share:	\$16.16	\$26.01
Dividends collected/share:	\$2.96	\$4.08
Total return:	27.64%	22.31%
Average Annual Total Return:	14.43%	11.76%
Starting investment:	\$10,000.00	\$10,000.00
Ending investment:	\$12,764.78	\$12,230.51
Years:	1.81	1.81



V nejlepším přestat.

Děkuji za pozornost